



BOCCOLA DI DRENAGGIO CON VALVOLA



Boccola di drenaggio con valvola | Bush drain with valve |
 Boucle de drain avec valve | Drenaje casquillo con válvula



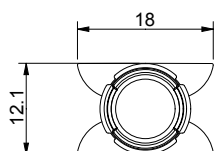
Corpo in Nylon e
 Sfera in Polietilene

Nylon body and
 polyethylene ball

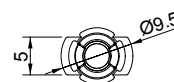
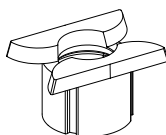
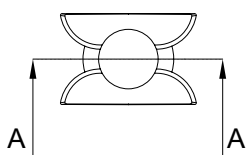
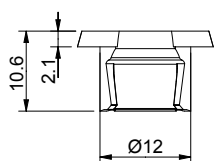
Corps en nylon et
 bille en polyéthylène

Cuerpo de nylon y
 bola de polietileno

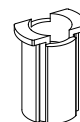
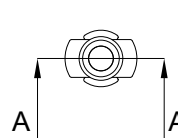
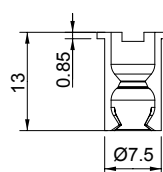
ART.	6841 6841.1				6841.3 6841.4				6841.5			
Imballo Package Conditionnement Embalaje	250 Pz				100 Pz				50 Pz			
Finiture disponibili Available finishes Finitions disponibles Acabados disponibles	1	2	3	4	1	2	3	4	1	2	3	4



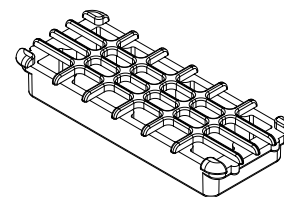
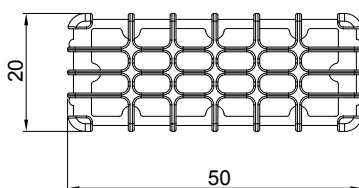
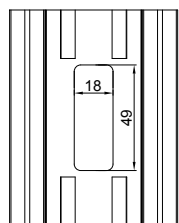
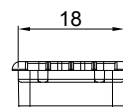
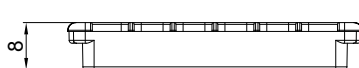
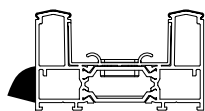
6841 | .4



6841.1 | .3



6841.5



ART	A	DESCRIZIONE DESCRIPTION
6841	12	Boccola di drenaggio senza valvola Bush drain without valve
6841.1	6	

ART	A	DESCRIZIONE DESCRIPTION
6841.3	7,5	Boccola di drenaggio con valvola Bush drain with valve
6841.4	12	
6841.5	49x18	Griglia di drenaggio Grid drain

PROGRAMMA CARRELLI ROLLERS PROGRAM

		PA	POM	INOX	
6675			Portata 90 Kg Weight 90 Kg	Portata 120 Kg Weight 120 Kg	
6667.XX 6668.XX		Portata 50 Kg Weight 50 Kg	Portata 90 Kg Weight 90 Kg	Portata 120 Kg Weight 120 Kg	
6656.XX		Portata 45 Kg Weight 45 Kg			
6671.XX		Portata 25 Kg Weight 25 Kg			
6670.XX		Portata 25 Kg Weight 25 Kg			

ART	H		L	
	min	max	min	max
6675.X - 6675.XX	20.5	30	23	38.7
6667 - 6667.X - 6668 - 6668.X	20.5	28.4	22	39.5
6656.5 - 6656.6	20.2	21.2	22	22.5

ART	H		L	
	min	max	min	max
6670.XX - 6671.X	20	25	22	22
6670.X	20	25	22	22



CARRELLI IN NYLON 1 CUSCINETTO



Carrelli in nylon 1 cuscinetto | 1-bearing nylon rollers
 Chariots en nylon 1 roulement | Ruedas de nylon con 1 cojinete



Dado, grano e vite di regolazione in acciaio zincato; corpo carrello in nylon; cuscinetti a sfera.



Nut, setscrew and adjustment screws in galvanized steel; roller body in nylon; ball bearings.



Écrou, grain et vis de réglage en acier zingué; corps chariot en nylon; roulements à billes.



Tuerca, prisionero y tornillo de regulación de acero galvanizado; cuerpo rueda de nylon; cojinete de bolas.

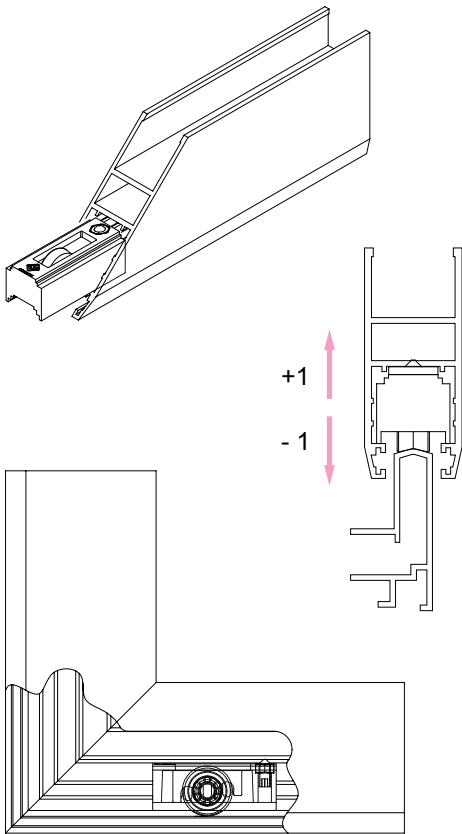


ART.	6671.1				6670.10 6670.11 6670.12 6670.54				6670.57				6671.51			
Imballo Package Conditionnement Embalaje	60 Pz				100 Pz				100 Pz				60 Pz			
Finiture disponibili Available finishes Finitions disponibles Acabados disponibles	1	2	3	4	1	2	3	4	1	2	3	4	1	2	3	4

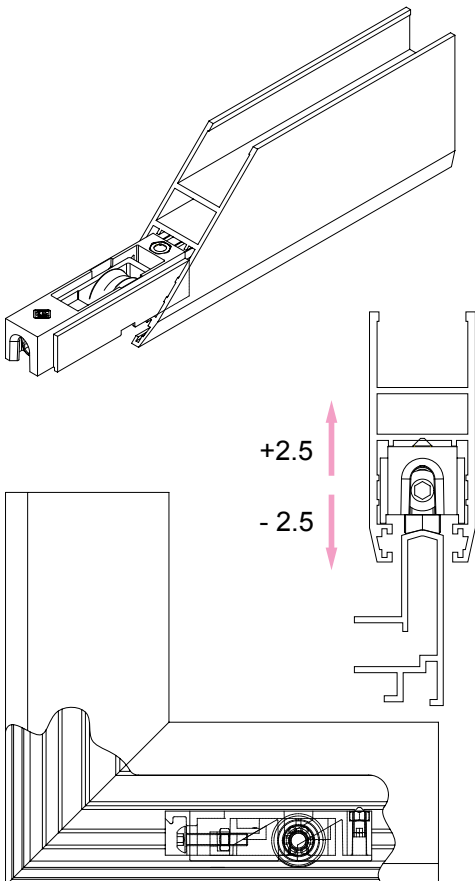
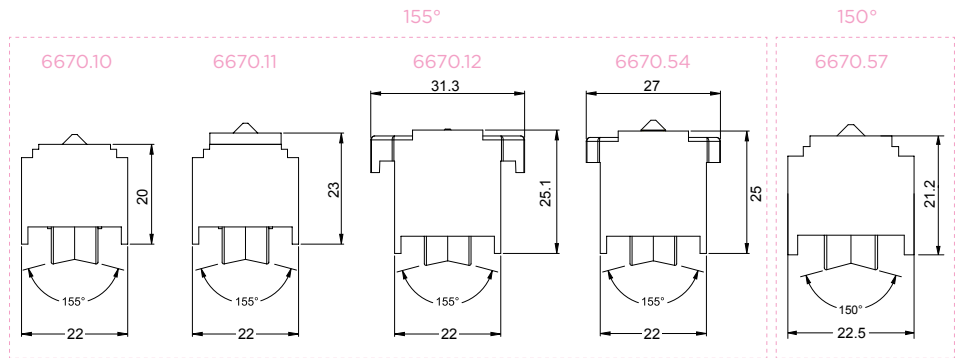
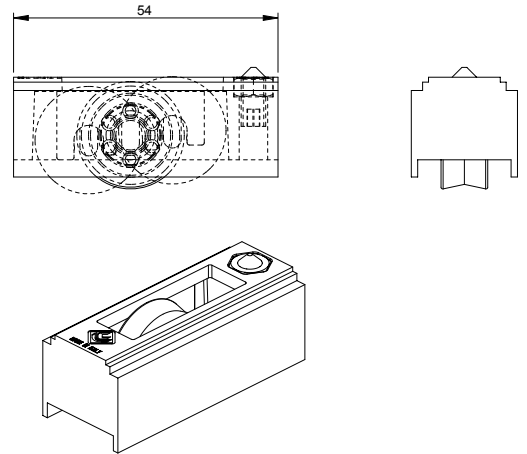
CARRELLO FISSO TRE POSIZIONI FIXED ROLLER THREE POSITIONS PORTATA 50 Kg PER ANTA WEIGHT 50 Kg FOR SASH		
ESTRUSORE EXTRUDER	SERIE SERIES	PORTATA 50Kg PER ANTA WEIGHT 50Kg FOR SASH
ALCAN	Abithal Runner	6670.11
ALL.CO	Export 60	6670.10
DFV	Classic slide	6670.10
EKU Sistemi (Gruppo Profilati)	PE 60 S	6670.10
EQUIPE	Sistemi 8000 S	6670.10
HYDRO	Domal 40 S	6670.11
INDINVEST	Alpha 560 S	6670.10
METRA	NC 60 int.	6670.11
OCMA	Parigi	6670.11
PASSERINI	Skeit 60	6670.10
RALOX	Ayrton 60	6670.10

CARRELLO FISSO TRE POSIZIONI FIXED ROLLER THREE POSITIONS PORTATA 40 Kg PER ANTA WEIGHT 40 Kg FOR SASH		
ESTRUSORE EXTRUDER	SERIE SERIES	PORTATA 40Kg PER ANTA WEIGHT 40Kg FOR SASH
ALL.CO	Export 60	6671.1
DFV	Classic slide	6671.1
EKU Sistemi (Gruppo Profilati)	PE 60S	6671.1
EQUIPE	Sistemi 8000 S	6671.1
INDINVEST	Alpha 560 S	6671.1
OCMA	Parigi	6671.1
PASSERINI	Skeit 60	6671.1
RALOX	Ayrton 60	6671.1

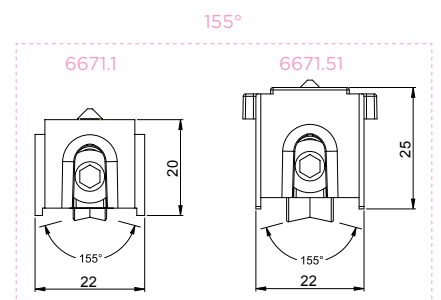
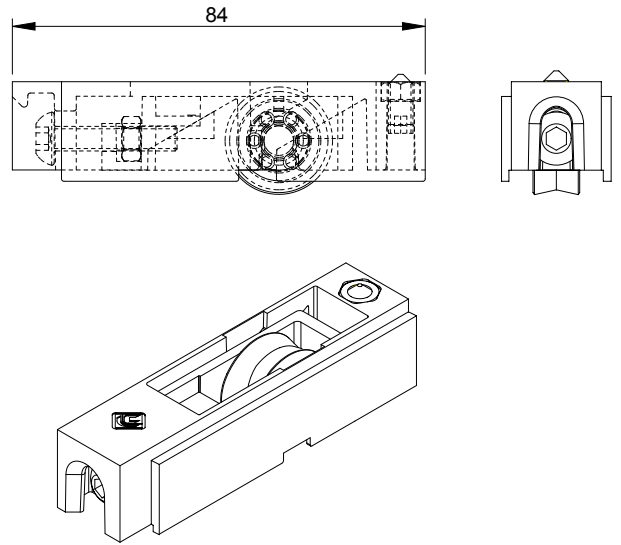
CARRELLO FISSO TRE POSIZIONI FIXED ROLLER THREE POSITIONS PORTATA 110 Kg PER ANTA WEIGHT 110 Kg FOR SASH		
ESTRUSORE EXTRUDER	SERIE SERIES	PORTATA 110Kg PER ANTA WEIGHT 110Kg FOR SASH
ALL.CO	Triall.co 65/90	6670.12
	Triall.co 65/90 TT	6670.12
	All.co Wood S	6670.12
ALEXIA	Alexia Slide 650 S	6670.12
	Alexia Slide 650 ST	6670.12
DFV	Classic Slide 650 S	6670.12
	Classic Slide 650 ST	6670.12
ETA	Start 900 S	6670.12
	Start 900 TT	6670.12
	Start 1000 WS	6670.12
TP PROFILATI	Ekos 60 THS	6670.12



Art. 6670.10



Art. 6671.1





CARRELLO DOPPIO BILANCIATO REGISTRABILE



Carrello doppio bilanciato registrabile | Balanced adjustable double roller | Chariot double équilibre réglable | Rueda regulable doble



Supporto esterno in nylon; supporto interno, grano, dado, vite e asse di bilanciamento in acciaio zincato; cuscinetti a sfera in acciaio temprato rivestito in nylon con fibra di vetro.



External support in nylon; internal support, setscrew, nut, screw and balancing axle in galvanized steel; ball bearings in tempered steel covered in nylon with fiberglass.



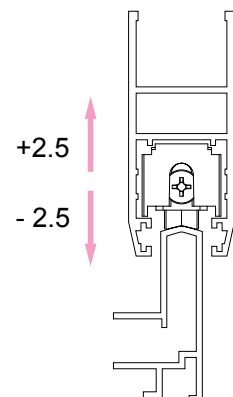
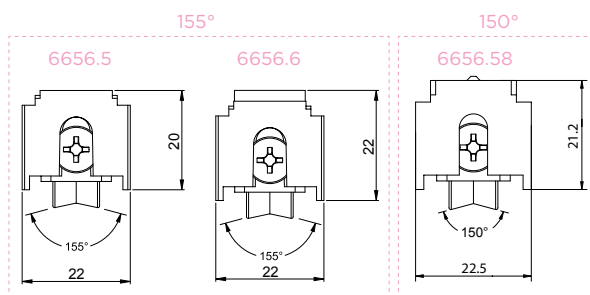
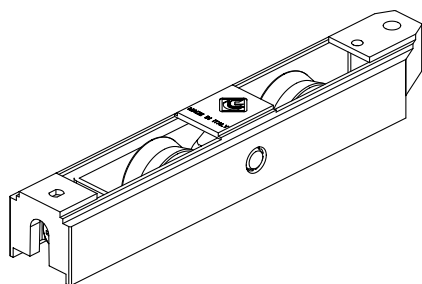
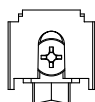
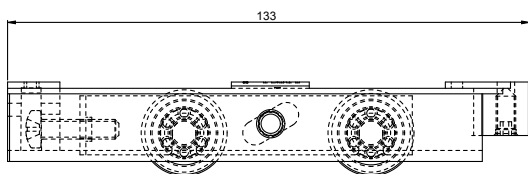
Support extérieur en nylon; support intérieur, grain, écrou, vis et axe de balancement en acier zingué; roulements à billes en acier trempé revêtu en nylon avec fibre de verre.



Soporte externo de nylon, soporte interno, prisionero, tuerca, tornillos y eje de balance de acero galvanizado; cojinetes de bolas de acero templado revestido en nylon con fibra de vidrio.

ART.	6656.5 6656.6 6656.58			
Imballo Package Conditionnement Embalaje	60 Pz			
Finiture disponibili Available finishes Finitions disponibles Acabados disponibles	1	2	3	4

ESTRUSORE EXTRUDER	SERIE SERIES	PORTATA 90Kg PER ANTA WEIGHT 90Kg FOR SASH
ALCAN	Abithal Runner	6656.6
ALL.CO	Export 60	6656.5
EKU Sistemi (Gruppo Profilati)	PE 60 slide	6656.5
HYDRO	Domal 40 S	6656.6
INDINVEST	Alpha 560 S	6656.5
METRA	NC 60 int.	6656.6
OCMA	Parigi	6656.6
PASSERINI	Skeit 60	6656.5
RALOX	Ayrton 60	6656.6



PENDOLINO TOP

CARRELLO BILANCIATO REGISTRABILE 100 KG



Carrello bilanciato registrabile | Balanced adjustable roller
Chariot equilibre réglable | Rueda regulable



Supporto esterno in nylon, supporto interno in zama zincata; grano, dado e vite di regolazione in acciaio zincato; cuscinetti a sfera o a rulli in acciaio temprato rivestiti in nylon con fibra di vetro.



External support in nylon, internal support in galvanized zamak; setscrew, nut and adjustment screws in galvanized steel; ball or roller bearings in tempered steel covered in nylon with fiberglass.



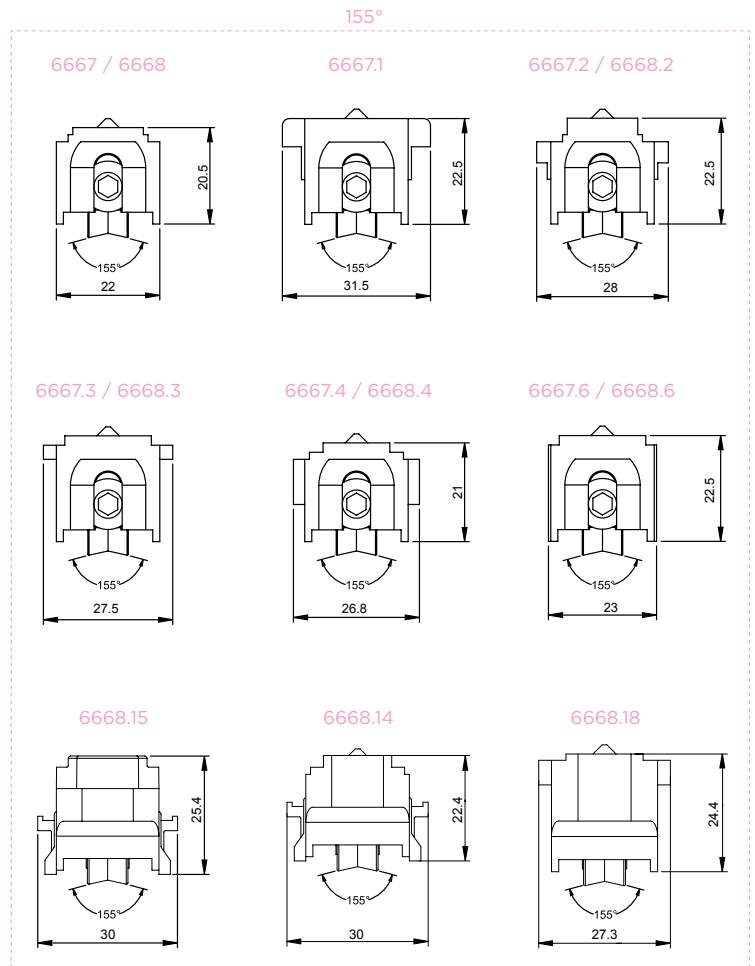
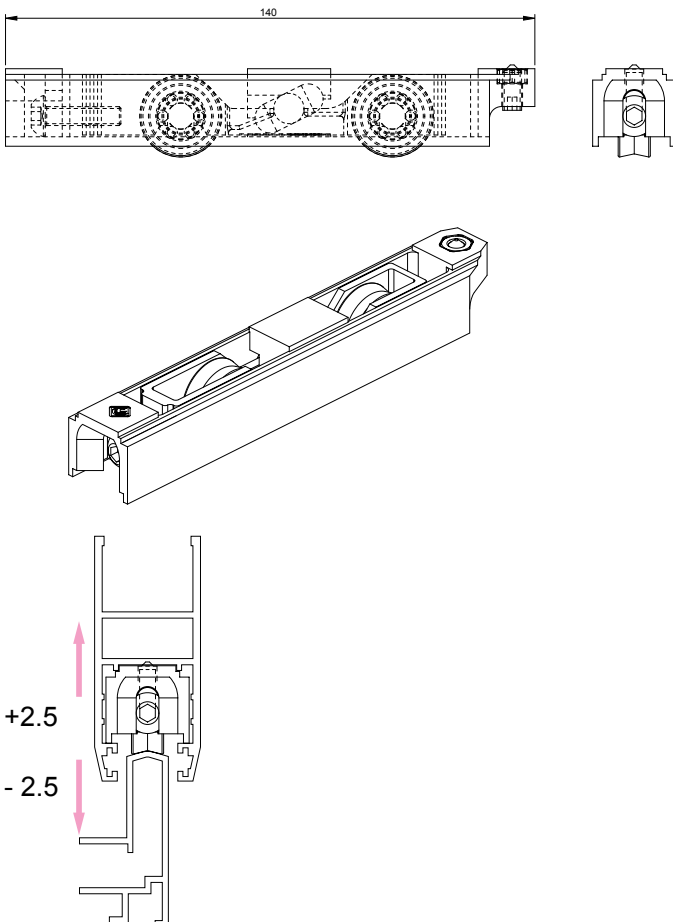
Support extérieur en nylon, support intérieur en zamak zingué; grain, écrou et vis de réglage en acier zingué; roulements à billes ou à aiguilles en acier trempé revêtus en nylon avec fibre de verre.



Soporte externo de nylon, soporte interno de zamac galvanizado; prisionero, tuerca y tornillo de regulación de acero galvanizado; cojinetes de bolas o de rodillos de acero templado revestidos en nylon con fibra de vidrio.



ART.	Tutti All Tous Todos			
Imballo Package Conditionnement Embalaje	60 Pz			
Finiture disponibili Available finishes Finitions disponibles Acabados disponibles	1	2	3	4





PENDOLINO TOP

CARRELLO BILANCIATO REGISTRABILE 150 - 180 KG



Carrello bilanciato registrabile | Balanced adjustable roller
 Chariot equilibre réglable | Rueda regulable



Supporto esterno in nylon, supporto interno in zama zincata; grano, dado e vite di regolazione in acciaio zincato; cuscinetti a sfera o a rulli in acciaio temprato rivestiti in nylon con fibra di vetro.



External support in nylon, internal support in galvanized zamak; setscrew, nut and adjustment screws in galvanized steel; ball or roller bearings in tempered steel covered in nylon with fiberglass.



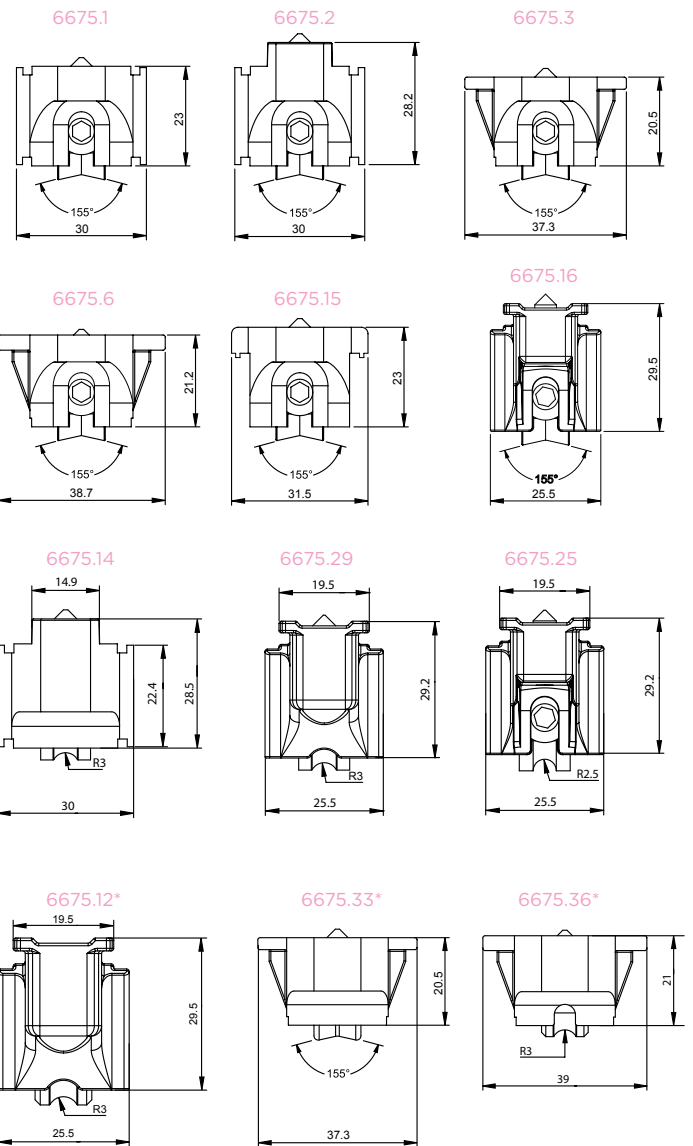
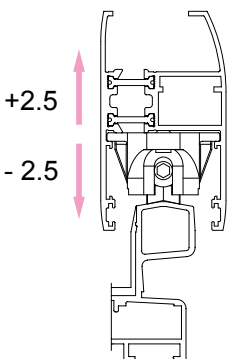
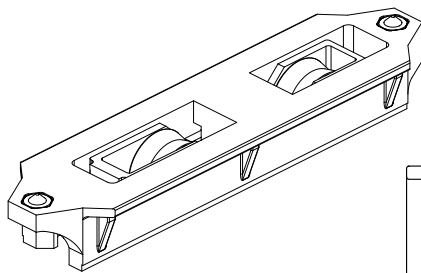
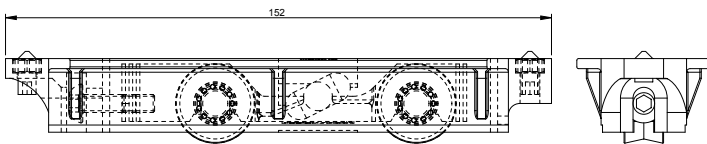
Support extérieur en nylon, support intérieur en zamak zingué; grain, écrou et vis de réglage en acier zingué; roulements à billes ou à aiguilles en acier trempé revêtus en nylon avec fibre de verre.



Soporte externo de nylon, soporte interno de zamak galvanizado; prisionero, tuerca y tornillo de regulación de acero galvanizado; cojinetes de bolas o de rodillos de acero templado revestidos en nylon con fibra de vidrio.



ART.	Tutti All Tous Todos			
Imballo Package Conditionnement Embalaje	60 Pz			
Finiture disponibili Available finishes Finitions disponibles Acabados disponibles	1	2	3	4



* Ruota in acciaio inox / Stainless steel wheel

ESTRUSORE EXTRUDER	SERIE SERIES	PORTATA 100 Kg PER ANTA WEIGHT 100Kg FOR SASH	PORTATA 150 Kg PER ANTA WEIGHT 150 Kg FOR SASH	PORTATA 180 Kg PER ANTA WEIGHT 180 Kg FOR SASH
ALCAN	Abithal Runner	6667	----	6668
	Eco Slide 106 HP	----	----	6675.25
ALEXIA	Alexia Slide 650 S	6667.1	----	6675.15
	Alexia Slide 110 HT			6675.25
	Alexia Slide 650 ST	6667.1	----	6675.15
ALL.CO	All.co Wood S	6667.1	----	6675.15
	Export 60	6667	----	6668
	Triall.co 65 - Triall.co 65 TT	6667.1	----	6675.15
	Triall.co 90 - Triall.co 90 TT	6667.1	----	6675.15
ALSISTEM	Planet Slide 106	----	----	6675.25
ALUMEC	ZN7-41 TT	----	6675.3	----
DFV	Classic Slide	6667	----	6668
	Classic Slide 650 S	6667.1	----	6675.15
	Classic Slide 650 ST	6667.1	----	6675.15
	Ecowin Slide 100TH	----	----	6675.25
EKU Sistemi (Gruppo Profilati)	Eku 100 Slide	----	----	6675.25
	Eku 100 Slide TT	----	----	6675.25
	Eku Woodart Slide	6667.2	----	6668.2
	PE 60 slide	6667	----	6668
	PE 70 slide - PE 70 slide TT	6667.2	----	6668.2
ETA	Eta 48 S	6667.4	----	6668.4
	Start 410 S	6667	----	6668
	Start 900 S	6667.1	----	6675.15
	Start 900 S TT	6667.1	----	6675.15
	Start 1000 WS	6667.1	----	6675.15
	AS 888			6675.25
GEAL	HP Slick			6675.25
HYDRO	Domal 40 S	6667	----	6668
	Domal Slide 56 (26255 26265)	6667.6	----	6668.6
	Domal Slide 80	----	6675.3	----
	Domal Slide PA 80	----	6675.3	----
IBLEA COLOR GROUP	Eku Vuerre 100 S TT	----	6675.3	----
	Eku Vuerre 100 SW TT	----	6675.3	----
INDINVEST	Alpha 560 S	6667	----	6668
	Gold 650 S - Gold 650 ST	6667.1	----	6675.15
METRA	NC 60 int.	6667	----	6668
	NC 60 STH	----	----	6675.1
	NC 70 S	----	----	6675.2
NOVAL	Noval Slide wood 900	6667.3	----	6668.3
OCMA	Parigi	6667	----	6668
PASSERINI	Skeit 60	6667	----	6668
	Skeit 60 super anta da 32 mm	6667	----	6668
	Skeit 60 super anta da 36 mm	6667.1	----	6675.15
	Skeit 60 super TH	6667.1	----	6675.15
	Skeit 110 TH	----	----	6675.25
PONZIO	Sliding 600	6667.4	----	6668.4
RALOX	Ayrton 60	6667	----	6668
	Ayrton 60 TT	----	----	6668.15
TOMA	Atlantis 78 S	----	6675.6	----
	Atlantis 78 STT	----	6675.6	----
	RS slide 100TT			6675.25
TP PROFILATI	Ekos 60 STH	6667.1	----	6675.15



TAPPO COPRILAVORAZIONE



Tappo coprilavorazione | Cover plug |
 Cache usinage | Tapón para cubrir la mecanización



Realizzato in nylon.



Made of nylon.



Réalisé en nylon.

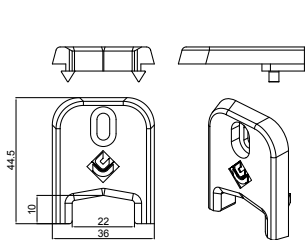


Fabricado en nylon.

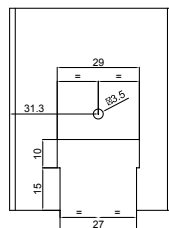


ART.	TUTTI ALL TOUS TODOS			
Imballo Package Conditionnement Embalaje	100 Pz			
Finiture disponibili Available finishes Finitions disponibles Acabados disponibles	1	2	3	4

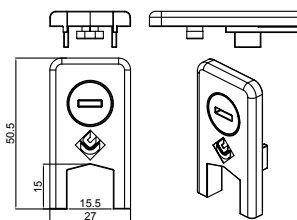
Art. 6829.1



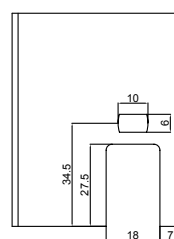
LAVORAZIONE
MACHINING



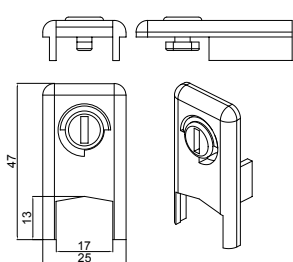
Art. 6824.3



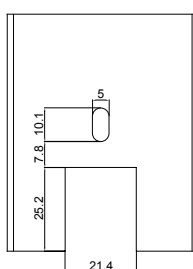
LAVORAZIONE
MACHINING



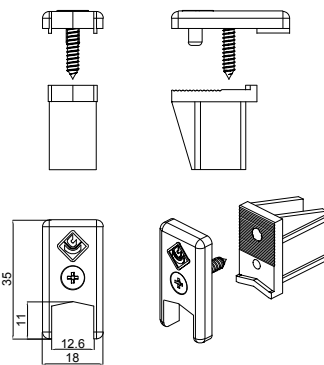
Art. 6830



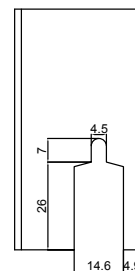
LAVORAZIONE
MACHINING



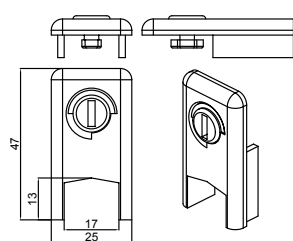
Art. 6827



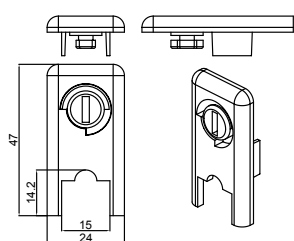
LAVORAZIONE
MACHINING



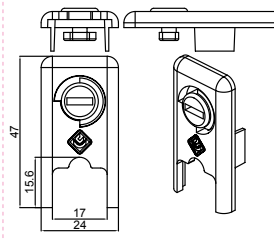
Art. 6824



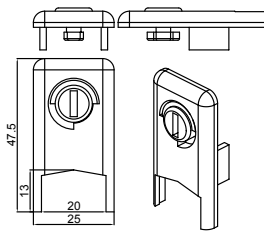
Art. 6824.2



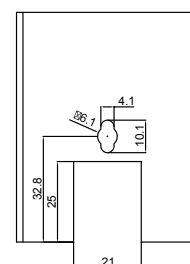
Art. 6824.4



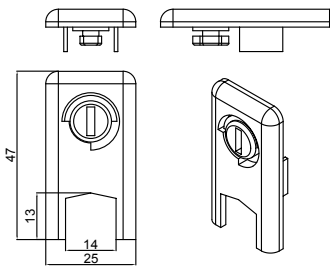
Art. 6825A



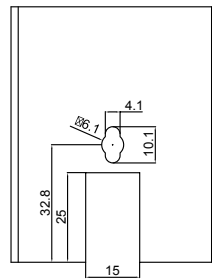
LAVORAZIONE
MACHINING



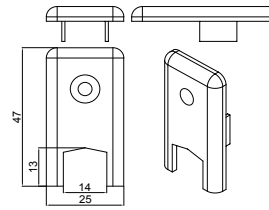
Art. 6825



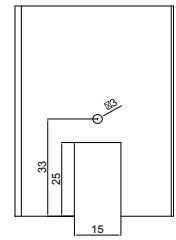
LAVORAZIONE
MACHINING



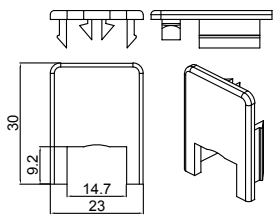
Art. 6825.1



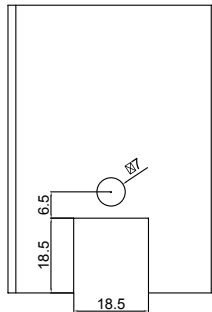
LAVORAZIONE
MACHINING



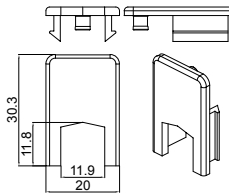
Art. 6821



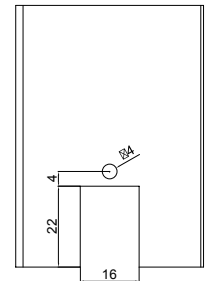
LAVORAZIONE
MACHINING



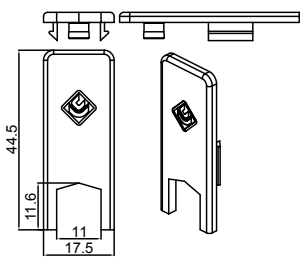
Art. 6822



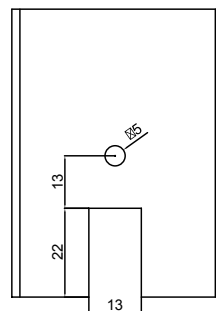
LAVORAZIONE
MACHINING



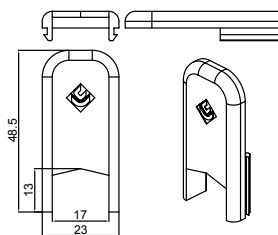
Art. 6823



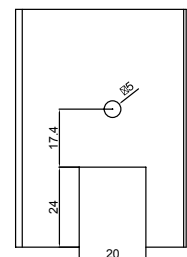
LAVORAZIONE
MACHINING



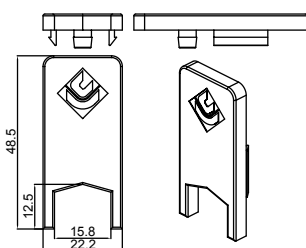
Art. 6829



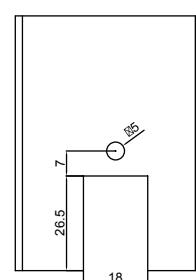
LAVORAZIONE
MACHINING



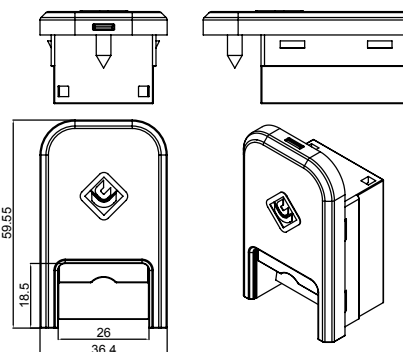
Art. 6860.2



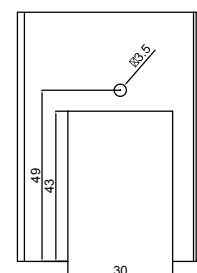
LAVORAZIONE
MACHINING



Art. 6861.1



LAVORAZIONE
MACHINING





TASSELLO AMMORTIZZATORE ANTISCARRUCOLAMENTO



Tassello ammortizzatore antiscarrucolamento | Safety shock-absorbing block | Tasseau amortisseur anti-deraillement | Taco amortiguador antidescarrilamiento



Tassello in nylon; tappo ammortizzatore in gomma; dado in acciaio zincato; grano in acciaio.



Block in nylon; rubber shock-absorbing plug; nut in galvanized steel; setscrew in steel.



Tasseau en nylon; bouchon amortisseur en caoutchouc; écrou en acier zingué; grain en acier.

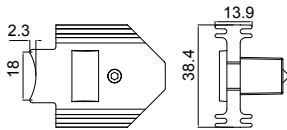


Taco de nylon; tapón amortiguador de goma; tuerca de acero galvanizado; prisionero de acero galvanizado.

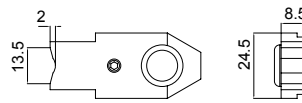


ART.	TUTTI ALL TOUS TODOS			
Imballo Package Conditionnement Embalaje	50 Pz			
Finiture disponibili Available finishes Finitions disponibles Acabados disponibles	1	2	3	4

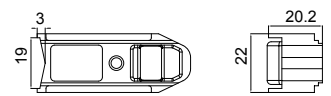
Art. 6810



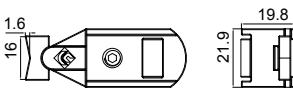
Art. 6811



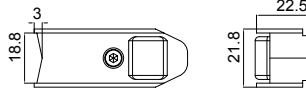
Art. 6812.1



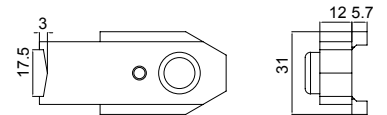
Art. 6812.2



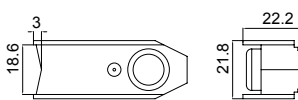
Art. 6813.1



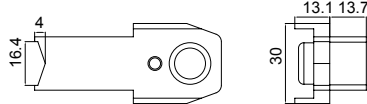
Art. 6814



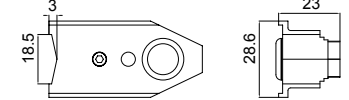
Art. 6815



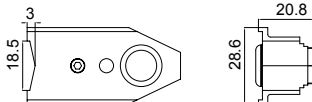
Art. 6815B



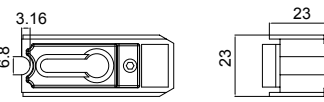
Art. 6816



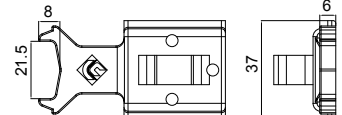
Art. 6816.1



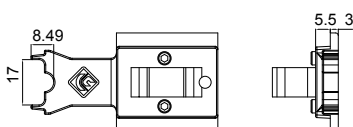
Art. 6816.2



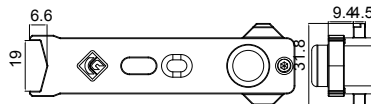
Art. 6816.3



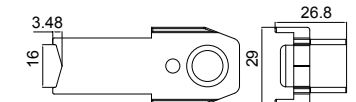
Art. 6816.4



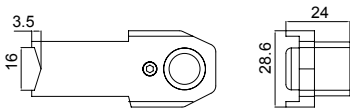
Art. 6816.5



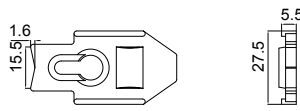
Art. 6817



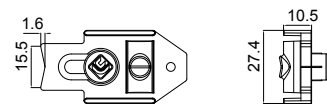
Art. 6818



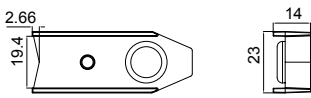
Art. 6819



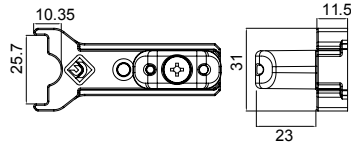
Art. 6819.1



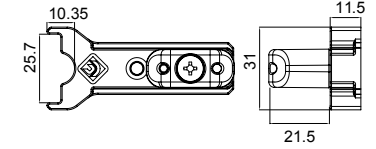
Art. 6820



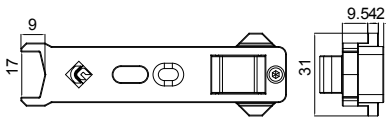
Art. 6845.3



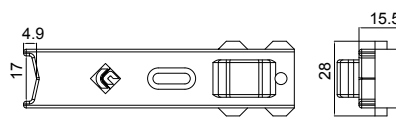
Art. 6845.4



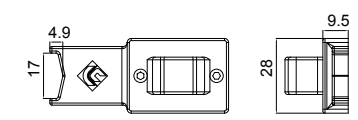
Art. 6850.2



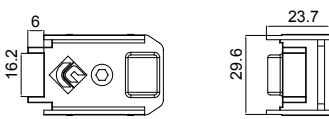
Art. 6851.1



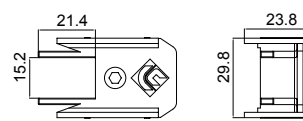
Art. 6851.2



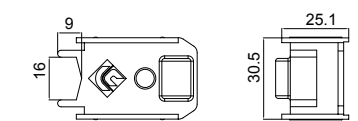
Art. 6852.1



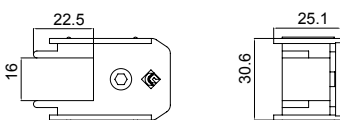
Art. 6852.2



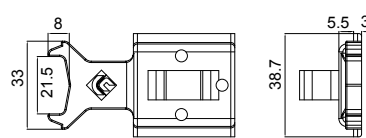
Art. 6852.3



Art. 6852.4



Art. 6853.1








TASSELLO DI TENUTA CENTRALE CON SPAZZOLINO



Tassello di tenuta centrale con spazzolino | Block with center seal and brush | Patin etancheite centrale avec joint brosse | Taco retenedor central con cepillo

 Tassello in alluminio estruso; spugnette autoadesive; viti autofilettanti in acciaio inox.

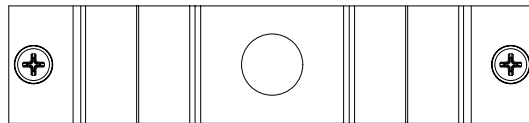
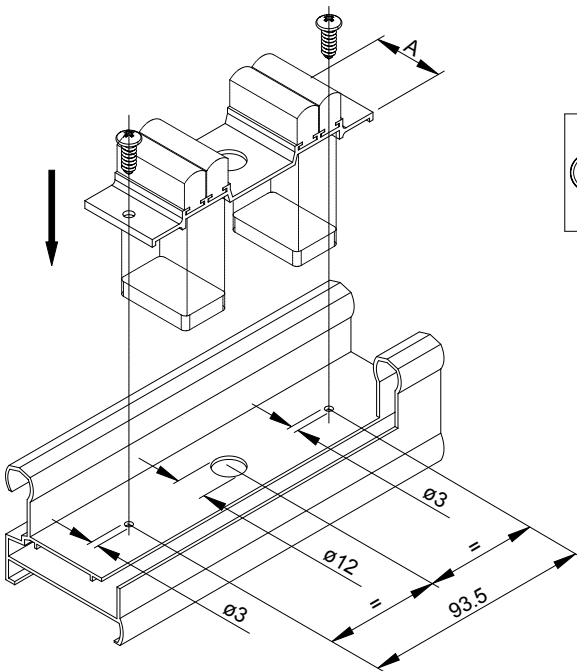
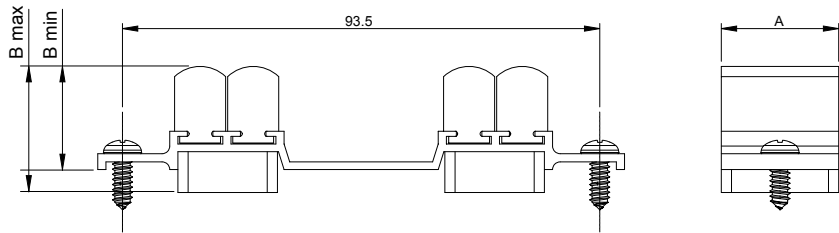
 Block in extruded aluminum; self-adhesive sponges; self-threading screws in stainless steel.

 Tasseau en aluminium extrudé; mouilleuses auto collantes; vis autotaraudeuses en acier inox.

 Taco de aluminio extruido; esponjas autoadhesivas; tornillos autorroscantes de acero inox.



ART.	TUTTI ALL TOUS TODOS				
Imballo Package Conditionnement Embalaje	50 Pz				
Finiture disponibili Available finishes Finitions disponibles Acabados disponibles	<table border="1"> <tr> <td>1</td> <td>2</td> <td>3</td> <td>4</td> </tr> </table>	1	2	3	4
1	2	3	4		



ART.	A	B
6832	23	17/22
6833	30	17/22
6835.2	46	17/22
6835.16	25	24
6836.1	32,5	23/31
6836.3	56,3	18/26
6835.9	28	17/22
6835.4	36	17/22

ART.	A	B
6834	31.5	18/26
6835.3	40	17/22
6835.6	25	17/22
6835.7	26	23.5
6835.5	44	17/22

ESTRUSORE EXTRUDER	SERIE SERIES	ART.
AL SISTEM	Global 60	6832
	Slide 106	6835.4
ALCAN	Abithal Runner	6832
ALEXIA	Alexia Slide 650 S	6833
	Alexia Slide 650 ST	6833
	Alexia Slide 110 HT	6835.4
ALL.CO	All.co Wood S	6835.2
	Export 60	6832
	Triall.co 65	6833
	Triall.co 65 TT	6833
	Triall.co 90	6833
	Triall.co 90 TT	6833
DFV	ECOWIN Slide 100TH	6835.4
"EKU Sistemi (Gruppo Profilati)"	PE 60 slide	6832
	PE 70 Slide	6835.16
	PE 70 Slide TT	6835.16
	Eku 100 Slide	6835.4
	Eku 100 Slide TT	6835.4
ETP	Start 410 S	6832
	Start 900 S	6833
	Start 900 ST	6833
	AS 888	6835.4
GEAL	HP Slick	6835.4
HYDRO	Domal 40 S	6832
	Domal Slide 80	6836.1
	Domal Slide PA 80	6836.1

ESTRUSORE EXTRUDER	SERIE SERIES	ART.
IBLEA COLOR GROUP	Eku Vuerre 100 SW TT	6836.3
INDINVEST	Alpha 560 S	6832
	Gold 650 S	6833
	Gold 650 S.T.	6833
METRA	NC 60 int.	6832
	NC 60 STH	6835.9
OCMA	Parigi	6832
PASSERINI	Skeit 60	6832
	Skeit 60 Super	6835.4
RALOX	Ayrton 60	6834
	Ayrton 60 TT	6834
SAPA	Erre 50 S	6832
TOMA	Atlantis 78 S	6836.3
	Atlantis 78 S TT	6836.3
	RS Slide 100 TT	6835.4
VARIE VARIOUS	Archimede	6835.3
	Double B	6835
	Dual	6835.1
	Penta 60 (taglio a 45°)	6835.6
	Penta 60 (taglio a 90°)	6835.7
	Sede di alloggiamento tassello tenuta centrale da 45 mm	6835.5
	Sede di alloggiamento tassello tenuta centrale da 47 mm	6835.2



VIPER

PARACOLPI PER SISTEMI SCORREVOLI AD APPLICARE



Paracolpi per sistemi scorrevoli ad applicare | Door bumper for sliding | Butée de coulissant | Amortiguador para correderas



Corpo in alluminio pressofuso; gommino paracolpi in TPE; vite TSPCR autofilettante in acciaio inox.



Die-cast aluminum body; bumper plug in TSPCR; stainless steel self-threading screw TSPCR.



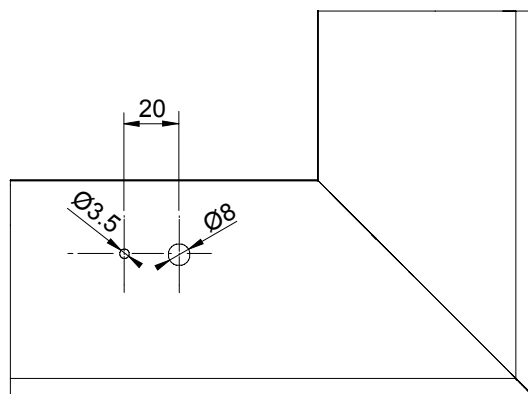
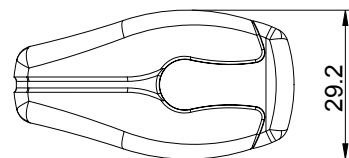
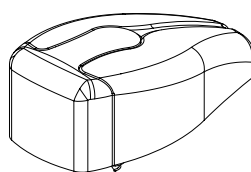
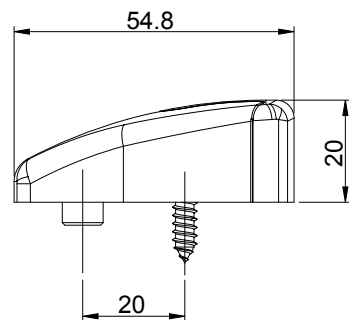
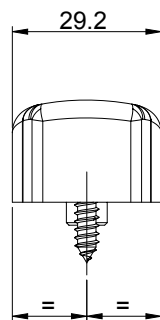
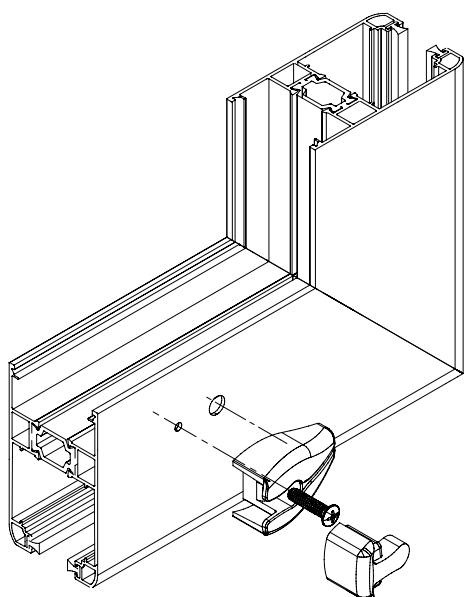
Corps en aluminium moulé sous pression; tampon en TPE; vis TSPCR autotaradeuse en acier inox.



Corps en aluminium moulé sous pression; tampon en TPE; vis TSPCR autotaradeuse en acier inox.



ART.	6844.1			
Imballo Package Conditionnement Embalaje	40 Pz			
Finiture disponibili Available finishes Finitions disponibles Acabados disponibles	1	2	3	4



DAKAR

CARRELLO FISSO A UN CUSCINETTO



Carrello fisso a un cuscinetto | One-bearing fixed roller |
 Chariot fixe a un roulement | Carro fijo con un cojinete



Supporto cuscinetto in alluminio estruso; cuscinetto in acciaio temprato rivestito in nylon con fibra di vetro.
 Portata: 60 kg per anta.



Bearing support in extruded aluminum; bearing in tempered steel covered in nylon with fiberglass.
 Load capacity: 60 kg per sash.



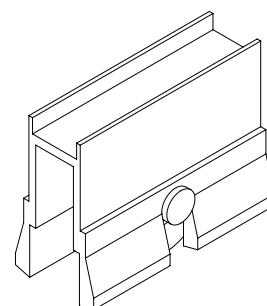
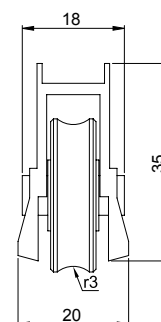
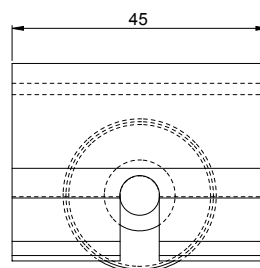
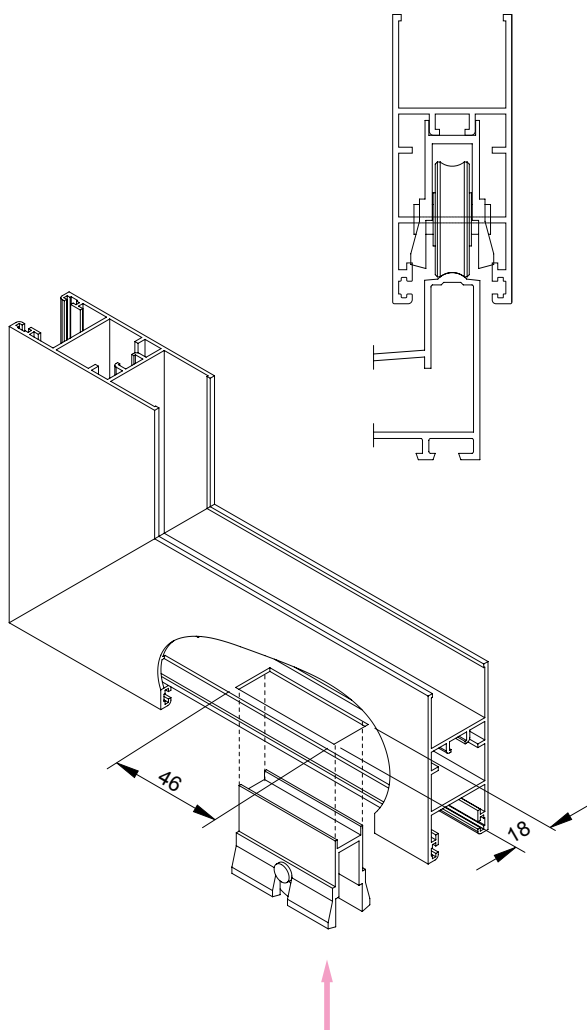
Bearing support in extruded aluminum; bearing in tempered steel covered in nylon with fiberglass.
 Load capacity: 60 kg per sash.



Bearing support in extruded aluminum; bearing in tempered steel covered in nylon with fiberglass.
 Load capacity: 60 kg per sash.



ART.	6661			
Imballo Package Conditionnement Embalaje	100 Pz			
Finiture disponibili Available finishes Finitions disponibles Acabados disponibles	1	2	3	4





DAKARDUO

CARRELLO DOPPIO REGISTRABILE



Carrello doppio registrabile | Adjustable double roller |
 Chariot double réglable | Rueda regulable doble



Supporto interno e supporto esterno in alluminio estruso; cuscinetti in acciaio temprato rivestito in nylon con fibra di vetro; vite di regolazione in acciaio inox. Portata: 140 kg per anta.



Internal and external supports in extruded aluminum; bearings in tempered steel covered in nylon with fiberglass; adjustment screws in stainless steel. Load capacity: 140 kg per sash.



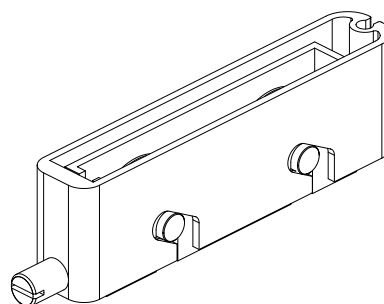
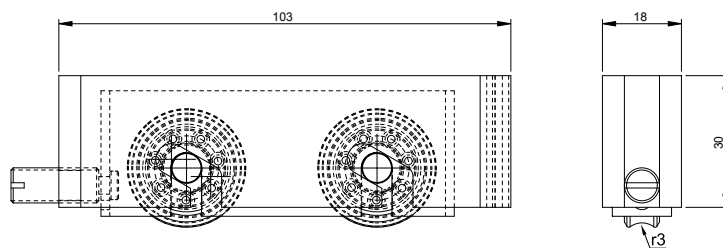
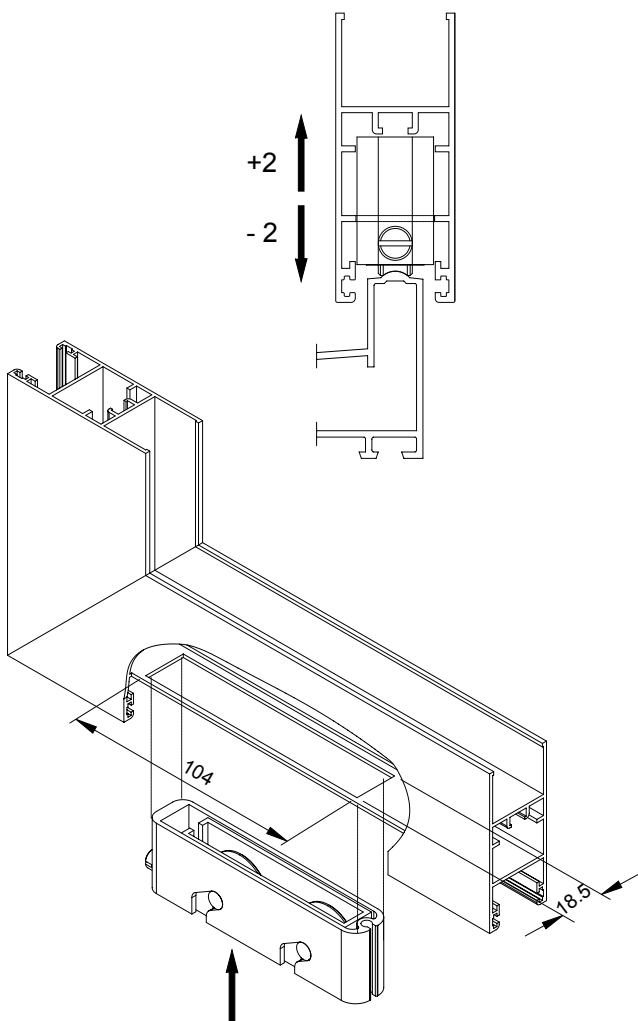
Support intérieur et support extérieur en aluminium extrudé; roulements en acier trempé revêtu en nylon avec fibre de verre; vis de réglage en acier inox. Portée: 140 kg chaque vantail.



Soporte interno y soporte externo de aluminio extruido; cojinetes de acero templado revestido en nylon con fibra de vidrio; tornillo de regulación de acero inox. Soporta: 140 kg por hoja.



ART.	6652			
Imballo Package Conditionnement Embalaje	60 Pz			
Finiture disponibili Available finishes Finitions disponibles Acabados disponibles	1	2	3	4



MIDKIT

LINEA QUALITÀ PER SERIE SCORREVOLE - 90 KG

Kit di assemblaggio | Assembling kit
Kit d'assemblage | Kit de montage



Squadrette di allineamento in nylon o alluminio; tasselli ammortizzatore, tappi coprilavorazione e boccole di drenaggio in nylon; tassello tenuta centrale in alluminio estruso; carrelli con supporto esterno in nylon, supporto interno in acciaio zincato e cuscinetti a sfera in acciaio temprato rivestito in nylon con fibra di vetro. Portata carrelli: 90 kg per anta.



Alignment corners in nylon or aluminium, nylon shock-absorber elements, plugs and drainage bushes; extruded aluminium central sealing element, roller with nylon external support, galvanized steel internal support and bearing in tempered steel covered by nylon with glass fiber. Load of the roller: 90 kg per sash.



Equerres d'alignement en nylon ou aluminium; tasseaux amortisseur, bouchons cache-usinage et clapet d'évacuation en nylon; tasseau étanchéité en aluminium extrudé; chariots avec support extérieur en nylon, support intérieur en acier trempé revêtus en nylon avec fibre de verre. Portée chariots: 90 kg chaque vantail.



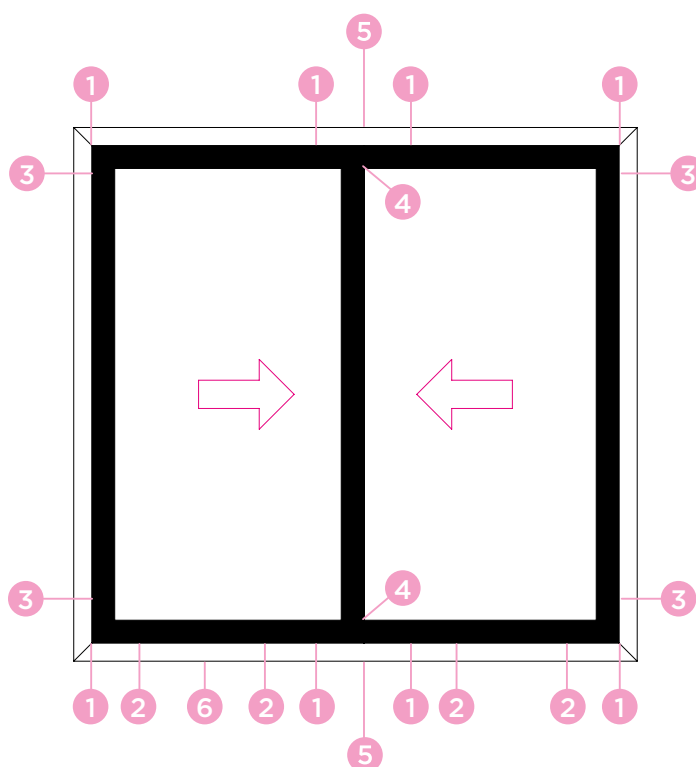
Escuadras de alineación en nylon o aluminio, tacos amortiguadores, tapas y tapas de salida de agua en nylon; taco retenedor central en aluminio extruido; ruedas con exterior en nylon y interior en acero galvanizado, y bolas en acero templado cubrido con fibra de vidrio. Carga máxima de las ruedas: 90 kg por hoja.



ART.	6601.11A	6601.1 6601.2 6601.3 6601.4 6601.5			
Imballo Package Conditionnement Embalaje	10 Kit	20 Kit			
Finiture disponibili Available finishes Finitions disponibles Acabados disponibles	1 2 3 4	1	2	3	4

ESTRUSORE EXTRUDER	SERIE SERIES	ART.
ALCAN	Abithal Runner	6601.4
ALL.CO	Export 60 S	6601.1
EKU Sistemi (Gruppo Profilati)	PE 60 slide	6601.1
HYDRO	Domal 40 S	6601.4
INDINVEST	Alpha 650 S	6601.1
METRA	NC 60 Int.	6601.3
OCMA	FC 70 Parigi	6601.4
PASSERINI	Skeit 60	6601.2
	Skeit 60 super anta da 32	6601.11A
RALOX	Ayrton 60	6601.5

RIF.	DESCRIZIONE DESCRIPTION	NUM.	
1	Squadrette di allineamento Alignment corner joints	16	
2	Carrelli Roller	4	
3	Tasselli ammortizzatore antiscarrucolamento Safety shock-absorber block	4	
4	Tappi coprilavorazione Cover plugs	4	
5	Tasselli tenuta centrale con spazzolino Block with center seal and brush	2	
6	Boccole di drenaggio Drainage bushes	3	





MIDKIT

LINEA QUALITÀ PER SERIE SCORREVOLE - 90 KG

Kit di assemblaggio con maniglie e squadrette | Assembling kit with handles and corners | Kit d'assemblage avec poignées et equerres | Kit de montaje con manillas y escuadras



Squadrette di allineamento in nylon o alluminio; tasselli ammortizzatore, tappi coprilavorazione e boccole di drenaggio in nylon; tassello tenuta centrale in alluminio estruso; carrelli con supporto esterno in nylon, supporto interno in acciaio zincato e cuscinetti a sfera in acciaio temprato rivestito in nylon con fibra di vetro. Cassa maniglia e occlusore in nylon, cursore in nylon con fibra di vetro, nasello in acciaio zincato, riscontro in acciaio inox AISI441. Squadrette in alluminio pressofuso. Portata carrelli: 90 kg per anta.



Alignment corners in nylon or aluminium, nylon shock-absorber elements, plugs and drainage bushes; extruded aluminium central sealing element, roller with nylon external support, galvanized steel internal support and bearing in tempered steel covered by nylon with glass fiber. Handle case and occluder in nylon; slider in nylon with fiberglass; strike in galvanized steel and stainless steel AISI441 plate. Corners in die cast aluminium. Load of the roller: 90 kg per sash.



Equerres d'alignement en nylon ou aluminium; tasseaux amortisseur, bouchons cache-usinage et clapet d'évacuation en nylon; tasseau étanchéité en aluminium extrudé; chariots avec support extérieur en nylon, support intérieur en acier zingué et roulements à billes en acier trempé revêtus en nylon avec fibre de verre. Caisse poignée et pièce de fixation en nylon; curseur en nylon avec fibre de verre; pêne en acier zingué et gâche en acier inox AISI441. Equerres en aluminium moulé sous pression. Portée chariots: 90 kg chaque vantail.



Escuadras de alineación en nylon o aluminio, tacos amortiguadores, tapas y tapas de salida de agua en nylon; taco retenedor central en aluminio extruido; ruedas con exterior en nylon y interior en acero galvanizado, y bolas en acero temperado cubrido con fibra de vidrio. Caja manilla y tapón de nylon; cursor de nylon con fibra de vidrio; gancho de acero galvanizado; cerradero de acero inox AISI441; Escuadras de aluminio de fundición. Carga máxima de las ruedas: 90 kg por hoja.



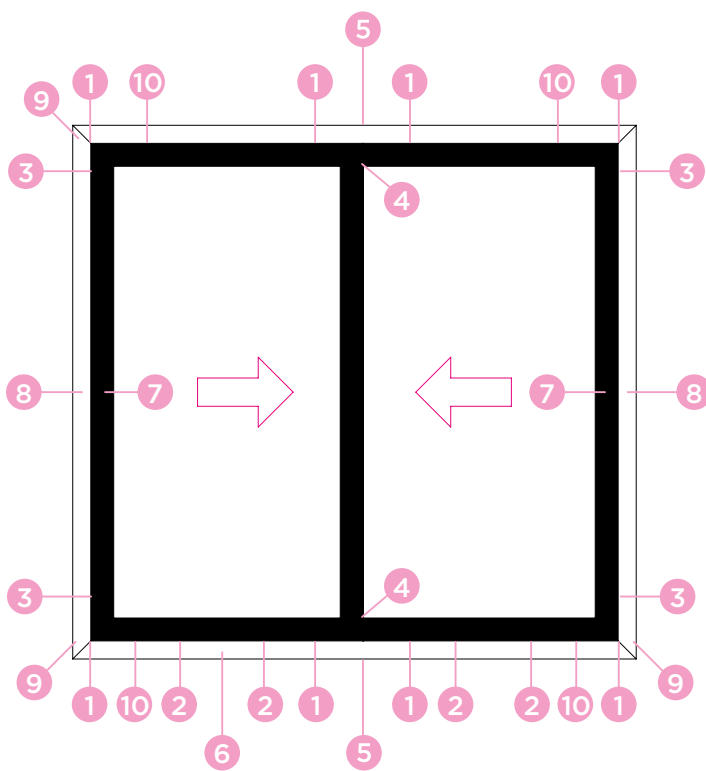
ART.	TUTTI ALL TOUS TODOS				
Imballo Package Conditionnement Embalaje	1 Kit				
Finiture disponibili Available finishes Finitions disponibles Acabados disponibles	<table border="1"> <tr> <td>1</td> <td>2</td> <td>3</td> <td>4</td> </tr> </table>	1	2	3	4
1	2	3	4		

ESTRUSORE EXTRUDER	SERIE SERIES	ART.	KIT DI ASSEMBLAGGIO SENZA MANIGLIE ASSEMBLING KIT WITHOUT HANDLES
ALCAN	Abithal Runner	6620.5	-----
ALL.CO	Export 60 S	6620.2	6620.10
EKU Sistemi (Gruppo Profilati)	PE 60 slide	6620.2	6620.10
HYDRO	Domal 40 S	6620.7	6620.15
METRA	NC 60 Int.	6620.4	6620.12
OCMA	FC 70 Parigi	6620.5	-----
PASSERINI	Skeit 60	6620.3	6620.11
	Skeit 60 super anta da 32	6620.21A	-----
RALOX	Ayrton 60	6620.8	-----



RIF.	DESCRIZIONE DESCRIPTION	NUM.	
1	Squadrette di allineamento Alignment corner joints	16	
2	Carrelli Roller	4	
3	Tasselli ammortizzatore antiscarrucolamento Safety shock-absorber block	4	
4	Tappi coprilavorazione Cover plugs	4	
5	Tasselli tenuta centrale con spazzolino Block with center seal and brush	2	
6	Boccole di drenaggio Drainage bushes	3	
7	Maniglie ad incasso Embedded handles	2	
8	Kit di chiusura Closing kit	2	
9	Squadrette telaio Frame corner joints	4 8*	
10	Squadrette anta Sash corner joints	8	

* In alcuni kit ci sono 8 squadrette.
 In some kits there are 8 corner joints





TOPKIT

LINEA FORTE PER SERIE SCORREVOLE

Kit di assemblaggio | Assembling kit |
 Kit d'assemblage | Kit de montage



Squadrette di allineamento in nylon o alluminio; tasselli ammortizzatore, tappi coprilavorazione in nylon; tassello tenuta centrale in alluminio estruso; carrelli con supporto esterno in nylon, supporto interno in zama zincata e cuscinetti a sfera in acciaio temprato rivestito in nylon con fibra di vetro. Portata carrelli: 100 kg per anta.



Nylon or aluminium alignment corners, nylon shock-absorber elements and plugs; extruded aluminium central sealing element; rollers with nylon external support, galvanized zamak internal support and bearing in tempered steel covered by nylon with glass fiber. Load of the roller: 100 kg per sash.



Equerres d'alignement en nylon ou aluminium; tasseaux amortisseur, bouchons cache-usinage en nylon; tasseau étanchéité en aluminium extrudé; chariots avec support extérieur en nylon, support intérieur en zamak zinguée et roulements à billes en nylon avec fibre de verre. Portée chariots: 100 kg chaque vantail.

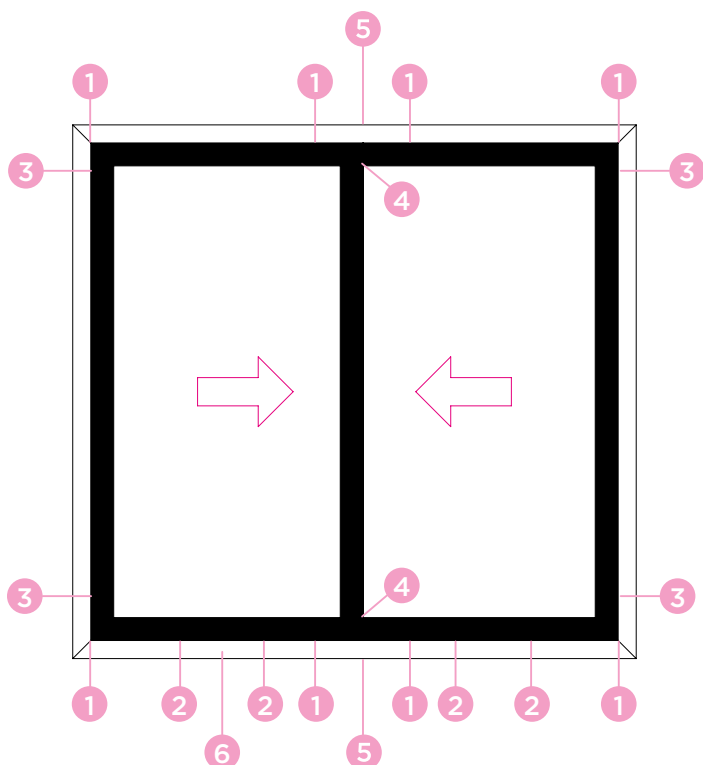


Escuadras de alineación en nylon o aluminio, tacos amortiguadores y tapas en nylon; taco retenedor central en aluminio extruido; ruedas con exterior en nylon y interior en zamak galvanizada, y bolas en acero templado cubrido en nylon con fibra de vidrio. Carga máxima de las ruedas: 100 kg por hoja.



ART.	660Z1.1 660Z.5 660Z.10 660Z.19 660Z.20 660Z.20 660Z.21 660Z.23	660Z.2 660Z.3 660Z.4 660Z.12 660Z.24 660Z.34 660Z.38
Imballo Package Conditionnement Embalaje	10 Kit	20 Kit
Finiture disponibili Available finishes Finitions disponibles Acabados disponibles	1 2 3 4	1 2 3 4

RIF.	DESCRIZIONE DESCRIPTION	NUM.	
1	Squadrette di allineamento Alignment corner joints	16	
2	Carrelli Roller	4	
3	Tasselli ammortizzatore antiscarrucolamento Safety shock-absorber block	4	
4	Tappi coprilavorazione Cover plugs	4	
5	Tasselli tenuta centrale con spazzolino Block with center seal and brush	2	





ESTRUSORE EXTRUDER	SERIE SERIES	ART.
ALCAN	Abithal Runner	660IZ.4
ALEXIA	Alexia Slide 650 S	660IZ.5
	Alexia Slide 650 TT	660IZ.5
ALL.CO	All.co Wood S	660IZ.19
	Export 60 S	660IZ.1
	Triall.co 65-90	660IZ.5
	Triall.co 65-90 TT	660IZ.5
DFV	Classic Slide 650 S	660IZ.5
	Classic Slide 650 TT	660IZ.5
EKU Sistemi (Gruppo Profilati)	PE 60 slide	660IZ.1
	PE 70	660IZ.20
	PE 70 TT	660IZ.21
ETA	Start 900 S	660IZ.34
	Start 900 STT	660IZ.34
	Start 1000 WS	660IZ.38
GASTALDELLO	Euroline 60 SN	660IZ.24
HYDRO	Domal 40 S	660IZ.4
	Domal slide 56prof. 26255/26265	660IZ.12
INDINVEST	Alpha 650 S	660IZ.1
	Gold 650 S	660IZ.10
	Gold 650 ST	660IZ.22
METRA	NC 60 Int.	660IZ.3
OCMA	FC 70 Parigi	660IZ.4
PASSERINI	Skeit 60	660IZ.2
PONZIO	Sliding 600	660IZ.24
TP PROFILATI	Ekos 60 STH	660IZ.23



TOPKIT

LINEA FORTE PER SERIE SCORREVOLE - 100KG

Kit di assemblaggio con maniglie e squadrette | Assembling kit with handles and corners | Kit d'assemblage avec poignées et equerres | Kit de montage con manillas y escuadras



Squadrette di allineamento in nylon o alluminio; tasselli ammortizzatore, tappi coprilavorazione in nylon; tasselli tenuta centrale in alluminio; carrelli con supporto esterno in nylon, supporto interno in zama zincata e cuscinetti a sfera in acciaio temprato rivestito in nylon con fibra di vetro; squadrette in alluminio pressofuso o nylon; maniglie con cassa in alluminio estruso e leva in zama; kit di chiusura in acciaio inox AISI 441. Squadrette in alluminio pressofuso Portata carrelli: 100 kg per anta.



Nylon or aluminium alignment corners, nylon shock-absorber elements and plugs; extruded aluminium central sealing element; rollers with nylon external support, galvanized zamak internal support and bearing in tempered steel covered by nylon with glass fiber; die-cast aluminium or nylon corners; handles with extruded aluminium case and zamak lever; closing kit made of stainless steel AISI 441. Corners in die cast aluminium. Load of the roller: 100 kg per sash.



Equerres d'alignement en nylon ou aluminium; tasseaux amortisseur, bouchons cache-usinage en nylon; tasseaux étanchéité en aluminium; chariots avec support extérieur en nylon, support intérieur en zamak zinguée et roulements à billes en acier trempé revêtus en nylon avec fibre de verre; équerres en aluminium moulé sous pression ou nylon; poignées avec caisse en aluminium extrudé et levier en zamak; kit de fermeture en acier inox AISI 441. Equerres en aluminium moulé sous pression. Portée chariots: 100 kg pour vantail.



Escuadras de alineación en nylon o aluminio, tacos amortiguadores y tapas en nylon; taco retenedor central en aluminio extruido; ruedas con exterior en nylon y interior en zamac galvanizada, y bolas en acero temperado cubrido en nylon con fibra de vidrio; escuadras en aluminio de fundición o nylon; manillas con cajas en aluminio extruido y leva en zamac; kit de cierre en acero inoxidable AISI 441. Escuadras de aluminio de fundición. Carga máxima de las ruedas; 100 kg por hoja.



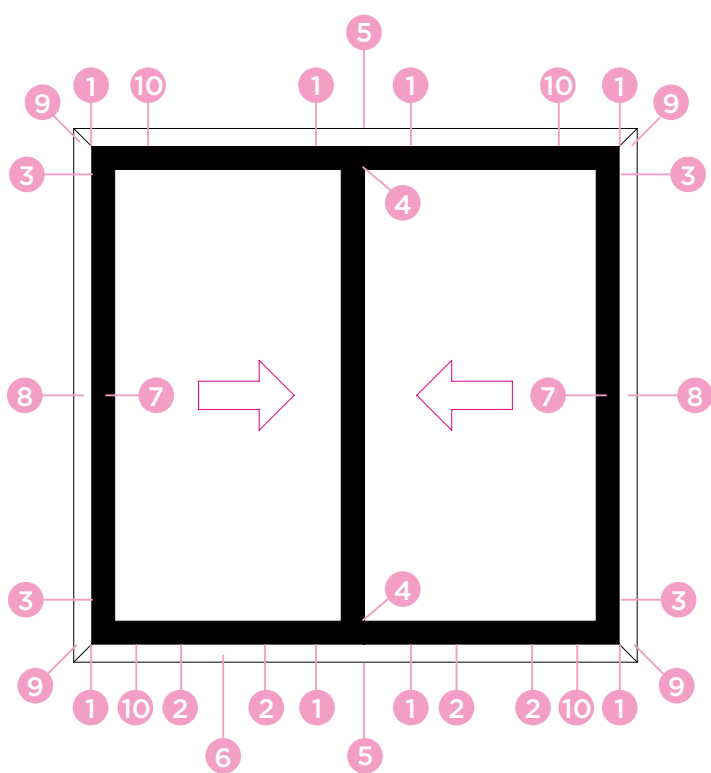
ART.	TUTTI ALL TOUS TODOS			
Imballo Package Conditionnement Embalaje	1 Kit			
Finiture disponibili Available finishes Finitions disponibles Acabados disponibles	1	2	3	4

ESTRUSORE EXTRUDER	SERIE SERIES	ART.
ALEXIA	Alexia Slide 650 TT	6620Z.25
ALL.CO	Export 60 S	6620Z.3
	Triall.co 65-90	6620Z.9
	Triall.co 65-90 TT	6620Z.10
DFV	Classic Slide 650 TT	6620Z.25
EKU Sistemi (Gruppo Profilati)	PE 60 slide	6620Z.3
	PE 70 TT	6620Z.36
INDINVEST	Gold 650 S	6620Z.27
	Gold 650 ST	6620Z.22
METRA	NC 60 Int.	6620Z.5
PASSERINI	Skeit 60	6620Z.4
	Skeit 60 super anta da 32	6620Z.11
	Skeit 60 super anta da 36	6620Z.13
TP PROFILATI	Ekos 60 STH	6620Z.23



RIF.	DESCRIZIONE DESCRIPTION	NUM.	
1	Squadrette di allineamento Alignment corner joints	16	
2	Carrelli Roller	4	
3	Tasselli ammortizzatore antiscarrucolamento Safety shock-absorber block	4	
4	Tappi coprilavorazione Cover plugs	4	
5	Tasselli tenuta centrale con spazzolino Block with center seal and brush	2	
6	Boccole di drenaggio Drainage bushes	3	
7	Maniglie ad incasso Embedded handles	2	
8	Kit di chiusura Closing kit	2	
9	Squadrette telaio Frame corner joints	4 8*	
10	Squadrette anta Sash corner joints	8	

* In alcuni kit ci sono 8 squadrette
 In some kits there are 8 corner joints





TOPKIT

LINEA FORTE PER SERIE SCORREVOLE - 150 / 180 KG

Kit di assemblaggio | Assembling kit |
 Kit d'assemblage a | Kit de montaje



Squadrette di allineamento in nylon o alluminio; tasselli ammortizzatore, tappi coprilavorazione in nylon; tasselli tenuta centrale in alluminio estruso; carrelli con supporto esterno in nylon, supporto interno in zama zincata e cuscinetti a rulli in acciaio temprato rivestito in nylon con fibra di vetro. Portata carrelli: 150/180 kg per anta.



Nylon or aluminium alignment corners, nylon shock-absorber elements, plugs and drainage bushes; extruded aluminium central sealing element; roller with nylon external support, galvanized zamak internal support and bearing in tempered steel covered by nylon with glass fiber. Load 150/180 kg per sash.



Equerres d'alignement en nylon ou aluminium; tasseaux amortisseur, bouchons cache-usinage en nylon; tasseaux étanchéité en aluminium extrudé; chariots avec support extérieur en nylon, support intérieur en zamak zinguée et roulements à aiguilles en acier trempé revêtus en nylon avec fibre de verre. Portée chariots: 150/180 kg chaque vantail.

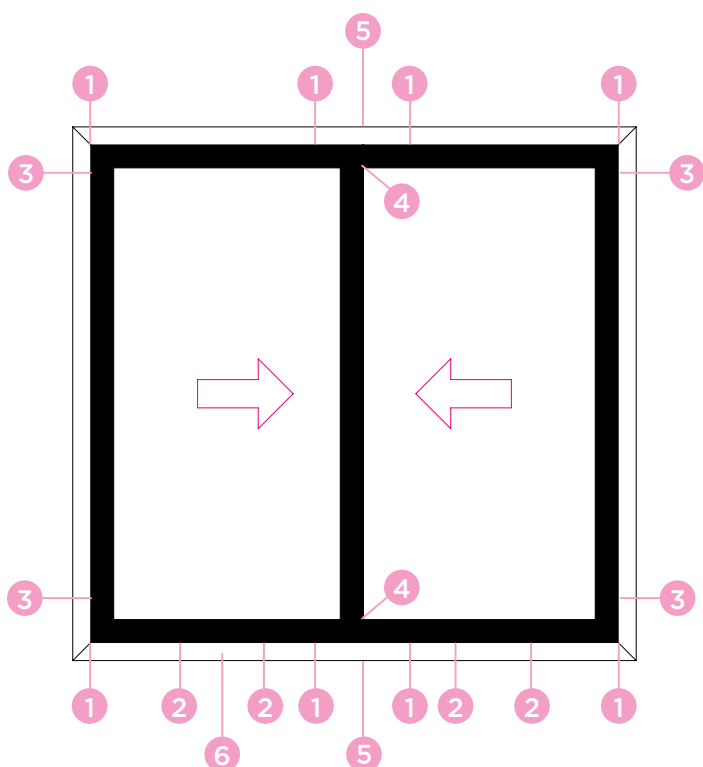


Escuadras de alineación en nylon o aluminio, tacos amortiguadores, tapas y tapas de salida de agua en nylon; taco retenedor central en aluminio extruido; ruedas con exterior en nylon y interior en zamac galvanizada, y bolas en acero templado cubrido en nylon con fibra de vidrio. Carga máxima 150/180 kg por hoja.



ART.	6601X.2 6601X.9 6601X.11 6601X.20 6601Y.5 6601Y.10 6601Y.13 6601Y.18 6601Y.19 6601Y.22 6601Y.23 6601Y.25 6601Y.31 6601Y.34 6601Y.36 6601Y.37 6601Y.38	6601X.1 6601X.2 6601X.3 6601X.4 6601X.12 6601X.14
Imballo Package Conditionnement Embalaje	10 Kit	20 Kit
Finiture disponibili Available finishes Finitions disponibles Acabados disponibles	1 2 3 4	1 2 3 4

RIF.	DESCRIZIONE DESCRIPTION	NUM.	
1	Squadrette di allineamento Alignment corner joints	16	
2	Carrelli Roller	4	
3	Tasselli ammortizzatore antiscarrucolamento Safety shock-absorber block	4	
4	Tappi coprilavorazione Cover plugs	4	
5	Tasselli tenuta centrale con spazzolino Block with center seal and brush	2	
6	Boccole di drenaggio Drainage bushes	3	





ESTRUSORE EXTRUDER	SERIE SERIES	PORTATA 150Kg PER ANTA WEIGHT 150Kg FOR SASH	PORTATA 180Kg PER ANTA WEIGHT 180Kg FOR SASH
ALCAN	Abithal Runner	----	6601X.4
	Eco Slide 106 HP	----	6601Y.41
ALEXIA	Alexia Slide 650 S	----	6601Y.5
	Alexia Slide 650 TT	----	6601Y.5
	Alexia Slide 110 HT	----	6601Y.41
ALL.CO	All.co Wood S	----	6601Y.19
	Export 60 S	----	6601X.1
	Triall.co 65-90	----	6601Y.5
	Triall.co 65-90 TT	----	6601Y.5
DFV	Classic Slide 650 S	----	6601Y.5
	Classic Slide 650 TT	----	6601Y.5
	Ecowin Slide	----	6601Y.41
EKU Sistemi (Gruppo Profilati)	PE 60 slide	----	6601X.1
	PE 70	----	6601X.20
	PE 70 TT	----	6601X.21
	EKU 100 Slide	----	6601Y.41
	EKU 100 Slide TT	----	6601Y.41
ETA	Start 900 S	----	6601Y.34
	Start 900 STT	----	6601Y.34
	Start 1000 WS	----	6601Y.38
	AS888	----	6601Y.41
GEAL	HP SLICK	----	6601Y.41
HYDRO	Domal 40 S	----	6601X.4
	Domal Slide 56 prof. 26255/26265	----	6601X.12
	Domal Slide 80	6601Y.18	----
	Domal Slide PA 80	6601Y.18	----
IBLEA COLOR GROUP	Eku Vuerre 100 STT	6601Y.18	----
	Eku Vuerre 100 SWTT	6601Y.68	----
INDINVEST	Alpha 650 S	----	6601X.1
	Gold 650 S	----	6601Y.10
	Gold 650 ST	----	6601Y.22
METRA	NC 60 Int.	----	6601X.3
	NC 60 STH	----	6601Y.36
	NC 70 S	----	6601Y.37
OCMA	FC 70 Parigi	----	6601X.4
PASSERINI	Skeit 60	----	6601X.2
	Skeit 60 super anta da 32	----	6601X.11
	Skeit 60 super anta da 36	----	6601Y.13
	Skeit 60 super TH	----	6601Y.31
	Skeit 70	----	6601X.9
RALOX	Ayrton 60 TT	----	6601X.14
TOMA	Atlantis 78 S	6601Y.25	----
	Atlantis 78 S TT	6601Y.25	----
	RS Slide 100TT	----	6601Y.41
TP PROFILATI	Ekos 60 STH	----	6601Y.23



TOPKIT

LINEA FORTE PER SERIE SCORREVOLE

Kit di assemblaggio con maniglie e squadrette | Assembling kit with handles and corners | Kit d'assemblage avec poignées et equerres | Kit de montage con manillas y escuadras



Squadrette di allineamento in nylon o alluminio; tasselli ammortizzatore, tappi coprilavorazione in nylon; tassello tenuta centrale in alluminio estruso; carrelli con supporto esterno in nylon, supporto interno in zama zincata e cuscinetti a rulli in acciaio temprato rivestito in nylon con fibra di vetro; squadrette in alluminio pressofuso o nylon; maniglie con cassa in alluminio estruso e leva in zama; kit di chiusura in acciaio inox AISI 441. Squadrette in alluminio pressofuso. Portata 150/180 kg per anta.



Nylon or aluminum alignment corners, nylon shock-absorber elements, plugs and drainage bushes; extruded aluminum central sealing element; roller with nylon external support, galvanized zamak internal support and roller bearing in tempered steel covered by nylon with glass fiber; die-cast aluminum or nylon corners; handles with extruded aluminum case and zamak lever; closing kit made of stainless steel AISI 441. Corners in die cast aluminium. Load 150/180 kg per sash.



Equerres d'alignement en nylon ou aluminium; tasseaux amortisseur, bouchons cache-usinage en nylon; tasseau étanchéité en aluminium extrudé; chariots avec support extérieur en nylon, support intérieur en zamak zinguée et roulements à aiguilles en acier trempé revêtus en nylon avec fibre de verre; équerres en aluminium moulé sous pression ou nylon; poignées avec caisse en aluminium extrudé et levier en zamak; kit de fermeture en acier inox AISI 441. Equerres en aluminium moulé sous pression. Portée 150/180 kg chaque vantail.



Escuadras de alineación en nylon o aluminio, tacos amortiguadores, tapas y tapas de salida de agua en nylon; taco retenedor central en aluminio extruido; ruedas con exterior en nylon y interior en zamac galvanizada, y bolas en acero temperado cubrido en nylon con fibra de vidrio; escuadras en aluminio de fundición o nylon; manillas con cajas en aluminio extruido y leva en zamac; kit de cierre en acero inoxidable AISI 441. Escuadras de fundición. Carga máxima 150/180 kg por hoja.

ART.	TUTTI ALL TOUS TODOS				
Imballo Package Conditionnement Embalaje	1 Kit				
Finiture disponibili Available finishes Finitions disponibles Acabados disponibles	<table border="1"> <tr> <td>1</td> <td>2</td> <td>3</td> <td>4</td> </tr> </table>	1	2	3	4
1	2	3	4		

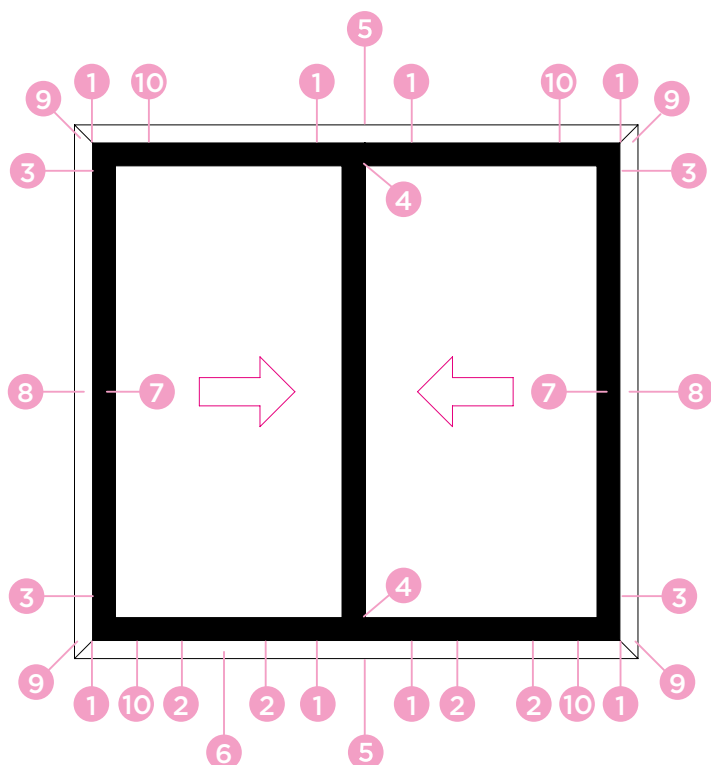
ESTRUSORE EXTRUDER	SERIE SERIES	PORTATA 150Kg PER ANTA WEIGHT 150Kg FOR SASH	PORTATA 180Kg PER ANTA WEIGHT 180Kg FOR SASH
ALCAN	Abithal Runner	----	6620X.6
ALEXIA	Alexia Slide 650 S	----	6620Y.29
	Alexia Slide 650 TT	----	6620Y.25
ALL.CO	Export 60 S	----	6620X.3
	Triall.co 65-90	----	6620Y.9
	Triall.co 65-90 TT	----	6620Y.10
DFV	Classic Slide 650 S	----	6620Y.29
	Classic Slide 650 TT	----	6620Y.25
EKU Sistemi (Gruppo Profilati)	PE 60 slide	----	6620X.3
	PE 70 TT	----	6620X.36
HYDRO	Domal Slide 80	6620Y.31	----
	Domal Slide PA 80	6620Y.31	----



ESTRUSORE EXTRUDER	SERIE SERIES	PORTATA 150Kg PER ANTA WEIGHT 150Kg FOR SASH	PORTATA 180Kg PER ANTA WEIGHT 180Kg FOR SASH
INDINVEST	Gold 650 S	----	6620Y.27
	Gold 650 ST	----	6620Y.22
METRA	NC 60 Int.	----	6620X.5
PASSERINI	Skeit 60 super anta da 36	----	6620Y.13
RALOX	Ayrton 60 TT	----	6620X.14
TP PROFILATI	Ekos 60 STH	----	6620Y.23

RIF.	DESCRIZIONE DESCRIPTION	NUM.	
1	Squadrette di allineamento Alignment corner joints	16	
2	Carrelli Roller	4	
3	Tasselli ammortizzatore anticarrucolamento Safety shock-absorber block	4	
4	Tappi coprilavorazione Cover plugs	4	
5	Tasselli tenuta centrale con spazzolino Block with center seal and brush	2	
6	Boccole di drenaggio Drainage bushes	3	
7	Maniglie ad incasso Embedded handles	2	
8	Kit di chiusura Closing kit	2	
9	Squadrette telaio Frame corner joints	4 8*	
10	Squadrette anta Sash corner joints	8	

* In alcuni kit ci sono 8 squadrette
 In some kits there are 8 corner joints





TOPKIT

LINEA FORTE PER SERIE SCORREVOLE

Kit di assemblaggio con maniglie e squadrette | Assembling kit with handles and corners | Kit d'assemblage avec poignées et equerres | Kit de montaje con manillas y escuadras



Tasselli ammortizzatore, tappi coprilavorazione, boccole di drenaggio in nylon; squadrette, tasselli tenuta centrale in alluminio; carrelli in alluminio estruso e cuscinetti a sfera in acciaio temprato rivestito in nylon con fibra di vetro; maniglie con cassa in alluminio estruso e leva in zama; kit di chiusura in acciaio inox AISI 441. Squadrette in alluminio estruso. Portata 60 kg per anta (con carrelli 1 cuscinetto), 140 kg per anta (con carrelli 2 cuscinetti).



Hock-absorber elements, nylon plugs and drainage bushes; aluminium corners and sealing elements; extruded aluminium rollers and bearing in tempered steel covered by glass fiber; Handles with extruded aluminium case and zamak lever; closing kit in stainless steel AISI 441. Corners in extruded aluminium. Load 60 kg per sash (with single roller), 140 kg per sash (with double roller).



Tasseaux amortisseur, bouchons cache-usinage, clapet d'évacuation en nylon; équerres, tasseaux étanchéité en aluminium; chariots en aluminium extrudé et roulements à billes en acier trempé revêtus en nylon avec fibre de verre; poignées avec caisse en aluminium extrudé et levier en zamak; kit de fermeture en acier inox AISI 441. Equerres en aluminium extrudé. Portée 60 kg chaque vantail (avec chariots simples), 140 kg chaque vantail (avec chariots doubles).ue vantail.



Tacos amortiguadores, tapas y tapas de salida de agua en nylon; escuadras, tacos retenedores en aluminio; ruedas en aluminio extruido y bolas en acero temperado cubrido con fibra de vidrio; manillas con caja en aluminio extruido y leva en zamak; kit de cierre en acero inox AISI 441. Escuadras en aluminio extruido. Carga máxima 60 kg por hoja (con rueda singular), 140 kg por hoja (con rueda doble).

ART.	6602.1 6602.2				6602.3 6602.4 6602.5 6602.6			
Imballo Package Conditionnement Embalaje	20 Kit				1 Kit			
Finiture disponibili Available finishes Finitions disponibles Acabados disponibles	1	2	3	4	1	2	3	4

ESTRUSORE EXTRUDER	SERIE SERIES	KIT DI ASSEMBLAGGIO PORTATA 140Kg PER ANTA ASSEMBLING KIT WEIGHT 140Kg FOR SASH	KIT DI ASSEMBLAGGIO PORTATA 60Kg PER ANTA ASSEMBLING KIT WEIGHT 60Kg FOR SASH	KIT DI ASSEMBLAGGIO CON SQUADRETTE E MANIGLIE PORTATA 140Kg PER ANTA ASSEMBLING KIT WITH CORNER JOINTS AND HANDLES WEIGHT 140Kg FOR SASH	KIT DI ASSEMBLAGGIO CON SQUADRETTE E MANIGLIE PORTATA 60Kg PER ANTA ASSEMBLING KIT WITH CORNER JOINTS AND HANDLES WEIGHT 60Kg FOR SASH	KIT DI ASSEMBLAGGIO CON MANIGLIE PORTATA 140Kg PER ANTA ASSEMBLING KIT WITH HANDLES WEIGHT 140Kg FOR SASH	KIT DI ASSEMBLAGGIO CON SQUADRETTE PORTATA 140Kg PER ANTA ASSEMBLING KIT WITH CORNER JOINTS WEIGHT 140Kg FOR SASH
SAPA	ERRE 50 S	6602.1	6602.2	6602.3	6602.4	6602.5	6602.6



RIF.	DESCRIZIONE DESCRIPTION	NUM.	
1	Squadrette di allineamento Alignment corner joints	16	
2	Carrelli Roller	4	
3	Tasselli ammortizzatore antiscarrucolamento Safety shock-absorber block	4	
4	Tappi coprilavorazione Cover plugs	4	
5	Tasselli tenuta centrale con spazzolino Block with center seal and brush	2	

RIF.	DESCRIZIONE DESCRIPTION	NUM.	
6	Boccole di drenaggio Drainage bushes	3	
7	Maniglie ad incasso Embedded handles	2	
8	Kit di chiusura Closing kit	2	
9	Squadrette telaio Frame corner joints	4	
10	Squadrette anta Sash corner joints	8	

